

# Nurruwiyi

in the Walpiri language of the Tanami Desert

Mal Webb, Seraphine Presley-Haines, Seini 'SistaNative' Taumoepeau

## A Verse

E/G#

Lead

*mf*  
Nyu-rru- wi yi ka-la- lu ya- pa- ju nyi- na-

ja Kirl- ka nya- yir-

*fine*

ni War- lal- ja

nyan- ja- ku ma- nu kur- du- ju- ku

Pur- da nyan- jar- la

## B Bridge

Wan- tang ka Yul- yurr- pun- gka

Wa- jirr- kin yir- la ma- nu Wa- ri- jar- ri- rla

**A** Verse

A

E/G#

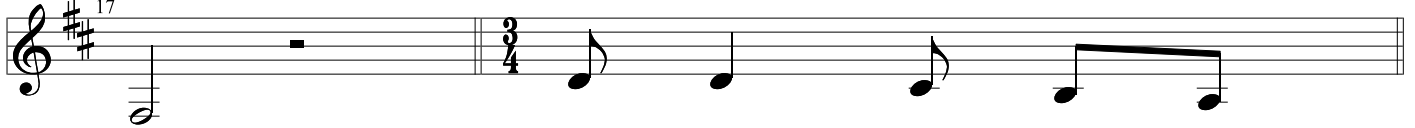


Mu- rru Mu- rru

Ra- raly- pa ma- nu pirr jir-

F# m

D



ti

Ngurr ju ma- ta wan-

**B** Bridge

E

A



gu

Ya- pa ju wa- pa- jal-

F# m

D



pa- lu

Ki- rri ka- ri ki- rra wu- rra

**B** Bridge

E

C# m

E



man- ji wir- lin yi

Wan- tang ka Yul- yurr-

F# m

D



pun- gka

Wa- jirr- kin yir- la ma- nu

*D.C. al Fine*

C# m

E



Wa- ri- jar- ri- rla